

site surveys



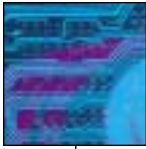
A successful implementation begins with a superior site survey. Throughout this critical discovery process, Datatrend gathers the necessary information quickly, efficiently and cost-effectively, to ensure that your project proceeds smoothly and that the final result meets all your objectives.

During the site survey process, Datatrend operates as your technology partner, working closely with your local, on-site staff to communicate project benefits and expectations, which helps promote a smooth, successful implementation.

Your site survey is the foundation of your project, both today and in the years ahead as you plan future business initiatives. It's much more than a technological inventory; it's an important tool toward making sure that your implementation is completed on time and within budget.

Datatrend relies on years of accumulated knowledge and expertise to conduct site surveys that lead the industry in their thoroughness and accuracy. Working in cooperation with your on-site staff, construction personnel and ownership contacts, we gather and evaluate all essential data about each of your existing environments. We then identify potential problems and create a plan, completely customized for your specific project.

Your Datatrend project team works closely with you throughout the process, ensuring that the site survey methodology is designed to reflect your objectives, and that the project itself is everything you expect – and more.



The Datatrend difference.

Datatrend's Site Survey professionals lead the industry in knowledge and expertise. Our thorough site surveys lay the foundation that helps keep your project on time and within budget.

Complete inventory. Your Datatrend site survey includes all essential information on technology assets, including make, model, serial number, verification and location of site equipment, as well as a clear cable layout and electrical circuit assessment.

Clear assessment. After your site survey is completed, we provide you with an easy-to-understand estimate of materials and services needed for future installation requirements.

National rollout expertise. Datatrend brings a proven track record in conducting site surveys for large-scale, multi-site projects. We customize all site survey instructions and checklists to meet your needs, ensuring the consistency and quality necessary for successful national and international rollouts.

Timely and cost-effective. Our extensive site survey experience results in an efficient process that benefits our clients. Our professionals are highly skilled at gathering data with minimal site visits, which helps control project costs and expedite your project schedule.

Quality assurance. Datatrend's Network Services team represents the industry's highest level of certification. While standing as a BICSI (Building Industry Consulting Service International) corporate member, our team members also include Registered Communication Distribution Designers (RCDD), Certified Wireless Network Associates (CWNA) and PMI-certified project management professionals.

For more information about Datatrend's Site Survey solutions, please call 800-367-7472 or visit www.datatrend.com

BICSI and RCDD are registered trademarks of BICSI, Inc.
PMI is a registered trademark of Project Management Institute, Inc.
CWNA is a registered trademark of Planet3 Wireless, Inc.
Other company, product, or service names may be trademarks or service marks of others.

Datatrend Technologies helps companies leverage technology to transform their business. Since 1987, we have helped businesses like yours become more efficient, reduce costs and increase revenues. From consulting...to solutions design...to providing server and storage infrastructure products and services...to delivering end-to-end network services...to training...Datatrend is your single source to make technology work.



**121 Cheshire Lane
Suite 700
Minnetonka, MN 55305
800-367-7472
datatrend.com**